

# Performance Report Spring 2018

Upper Saddle River School District

September 17, 2018

Amy D'Ambola  
Kimberley Harrington

Measuring  
College and  
Career Readiness

# NEW JERSEY - STATEWIDE ASSESSMENTS

Assessment	Students
■ PARCC English Language Arts and Literacy	■ All students Grades 3 – 8
■ PARCC Mathematics	■ All students Grades 3 – 8
■ NJSLA-S (Science)	■ 5th and 8th grade students
■ ACCESS 2.0	■ English Language Learners
■ DLM (ELA, Math, and Science)	■ Alternate Assessment for students with significant cognitive disabilities

# PARCC Results - Summary

COMPARISON OF UPPER SADDLE RIVER'S  
2015-2018  
PARCC ADMINISTRATIONS  
ENGLISH LANGUAGE ARTS/LITERACY - PERCENTAGES

Grade	Not Yet Meeting Expectations (Level 1)				Partially Meeting Expectations (Level 2)				Approaching Expectations (Level 3)				Meeting Expectations (Level 4)				Exceeding Expectations (Level 5)			
	'15	'16	'17	'18	'15	'16	'17	'18	'15	'16	'17	'18	'15	'16	'17	'18	'15	'16	'17	'18
3	2%	0%	1%	<b>0%</b>	5%	2%	5%	<b>3%</b>	24%	16%	18%	<b>11%</b>	57%	64%	51%	<b>59%</b>	12%	18%	25%	<b>27%</b>
4	0%	0%	1%	<b>1%</b>	4%	2%	2%	<b>2%</b>	14%	6%	7%	<b>7%</b>	46%	52%	37%	<b>26%</b>	36%	40%	54%	<b>64%</b>
5	1%	0%	1%	<b>0%</b>	2%	3%	2%	<b>1%</b>	15%	11%	8%	<b>7%</b>	57%	62%	60%	<b>53%</b>	25%	24%	29%	<b>38%</b>
6	1%	1%	1%	<b>0%</b>	5%	2%	3%	<b>8%</b>	13%	16%	9%	<b>12%</b>	55%	57%	66%	<b>59%</b>	26%	24%	20%	<b>21%</b>
7	1%	2%	1%	<b>1%</b>	5%	4%	2%	<b>5%</b>	10%	7%	9%	<b>8%</b>	35%	36%	40%	<b>34%</b>	49%	51%	48%	<b>53%</b>
8	3%	0%	4%	<b>1%</b>	3%	5%	6%	<b>0%</b>	16%	6%	16%	<b>6%</b>	49%	44%	34%	<b>43%</b>	29%	45%	41%	<b>50%</b>

# PARCC PERFORMANCE 2015-2018 ENGLISH/LANGUAGE ARTS

	<b>% Meeting or Exceeding Expectations</b>			
	<b><u>2015</u></b>	<b><u>2016</u></b>	<b><u>2017</u></b>	<b><u>2018</u></b>
Grade 3	69%	82%	76%	86%
Grade 4	82%	92%	91%	90%
Grade 5	82%	86%	89%	91%
Grade 6	81%	81%	86%	80%
Grade 7	84%	87%	88%	87%
Grade 8	78%	89%	75%	93%

COMPARISON OF UPPER SADDLE RIVER'S  
2018 SPRING PARCC ADMINISTRATIONS  
ENGLISH LANGUAGE ARTS/LITERACY

	% Meeting or Exceeding Expectations	
	Upper Saddle River	State
Grade 3	85.7%	51.7%
Grade 4	90.7%	58.0%
Grade 5	91.7%	58.0%
Grade 6	80%	56.2%
Grade 7	86.5%	62.7%
Grade 8	92.9%	60.4%

# Comparative Data Special Education and Regular Education English/Language Arts

	% Meeting or Exceeding Expectations	
	Special Education	Regular Education
Grades 3 - 5	39 out of 67 students	308 out of 321 students
Grades 6 - 8	44 out of 74 students	332 out of 359 students

SpecEd	G4	G5	G6	G7 Benchmark	At-Risk Ratio
	PARCC 2015	PARCC 2016	PARCC 2017	2017-2018 Form A	
			780	89%	0%
	814	813	816	83%	0%
✓	777	749	748	66%	50%
	804	791	805	66%	0%
	798	800	775	63%	0%
	771	786	778	63%	0%
			783	63%	0%
✓	774	768	758	57%	25%
	793	797	783	57%	25%
	754	752	765	57%	25%
✓	786	789	779	54%	25%
✓	719	767	744	51%	75%
		734	763	43%	67%
	764	792	790	43%	25%
✓	748	731	731	37%	100%
	750	795	772	31%	25%



	(1)	(2)	(3)	(4)	(8)	(9)	Avg.	Group
)	33	50	67	0	33	0	33	1
)	33	17	100	0	0	33	29	1
4)	0	17	33	33	0	0	14	1
545)	33	17	67	0	67	0	29	1
3499)	67	17	100	0	33	0	33	1
945)	0	33	67	0	0	0	19	1
01)	0	0	67	0	0	33	14	1
	33	50	33	0	0	0	24	1
505)	33	33	33	0	67	0	29	1
7)	67	17	67	0	33	0	29	1
	33	0	67	0	0	0	14	1
)	33	50	100	33	0	0	38	1
	67	33	67	33	33	0	38	1
399)	0	17	33	0	67	0	19	1
	0	17	33	33	0	0	14	1

2016-17 Gr 3 LAL PARCC ▾		2017-18 Gr 4 LAL PARCC ▾	
Level	Scaled	Level	Scaled
Exceeding	827	Exceeding	831
Approaching	742	Meeting	751
Exceeding	846	Exceeding	805
Approaching	744	Meeting	768
		Partially Meeting	713
		Exceeding	790
Exceeding	840	Exceeding	821
Meeting	786	Meeting	785
		Exceeding	822
Partially Meeting	720	Meeting	764
Partially Meeting	717	Meeting	787
Exceeding	830	Exceeding	850
Exceeding	800	Exceeding	850

# Monitoring Individual Students English Language Arts

	2017-2018	
	<u>2017</u> <u>(below grade level)</u>	<u>2018</u> <u>(% meeting or</u> <u>exceeding)</u>
Grades 3/4	31 students	58%
Grades 4/5	7 students	57%
Grades 5 /6	13 students	8%
Grades 6/7	19 students	26%
Grades 7/8	18 students	44%

COMPARISON OF UPPER SADDLE RIVER'S  
2015-2018  
PARCC ADMINISTRATIONS  
MATHEMATICS - PERCENTAGES

	Not Yet Meeting Expectations (Level 1)				Partially Meeting Expectations (Level 2)				Approaching Expectations (Level 3)				Meeting Expectations (Level 4)				Exceeding Expectations (Level 5)			
Grade	'15	'16	'17	'18	'15	'16	'17	'18	'15	'16	'17	'18	'15	'16	'17	'18	'15	'16	'17	'18
3	1%	0%	0%	<b>0%</b>	1%	0%	4%	<b>5%</b>	24%	13%	8%	<b>9%</b>	58%	52%	56%	<b>45%</b>	16%	35%	32%	<b>41%</b>
4	0%	0%	0%	<b>0%</b>	8%	2%	1%	<b>2%</b>	16%	13%	11%	<b>5%</b>	63%	70%	67%	<b>61%</b>	13%	15%	21%	<b>32%</b>
5	0%	0%	0%	<b>1%</b>	4%	4%	5%	<b>2%</b>	18%	17%	16%	<b>12%</b>	55%	56%	61%	<b>52%</b>	23%	23%	18%	<b>34%</b>
6	0%	1%	1%	<b>0%</b>	9%	9%	1%	<b>8%</b>	20%	22%	17%	<b>25%</b>	58%	56%	59%	<b>55%</b>	13%	12%	21%	<b>12%</b>
7	1%	2%	1%	<b>1%</b>	4%	4%	2%	<b>3%</b>	15%	19%	14%	<b>10%</b>	56%	46%	48%	<b>52%</b>	24%	29%	35%	<b>34%</b>
8*	5%	6%	5%	<b>3%</b>	3%	8%	8%	<b>3%</b>	23%	19%	19%	<b>8%</b>	66%	65%	60%	<b>80%</b>	3%	2%	8%	<b>6%</b>
ALG I	0%	0%	0%	<b>0%</b>	0%	0%	0%	<b>0%</b>	4%	0%	0%	<b>0%</b>	67%	47%	35%	<b>22%</b>	29%	53%	65%	<b>78%</b>

# PARCC PERFORMANCE

## 2015-2018

### MATHEMATICS

	% Meeting or Exceeding Expectations			
	<u>2015</u>	<u>2016</u>	<u>2017</u>	<u>2018</u>
Grade 3	74%	87%	88%	86%
Grade 4	76%	85%	88%	93%
Grade 5	78%	79%	79%	86%
Grade 6	71%	68%	80%	67%
Grade 7	80%	75%	83%	86%
Grade 8	69%	67%	68%	86%
Algebra	96%	100%	100%	100%

COMPARISON OF UPPER SADDLE RIVER'S  
2018 SPRING PARCC ADMINISTRATIONS  
MATHEMATICS

	% Meeting or Exceeding Expectations	
	Upper Saddle River	State
Grade 3	85.8%	53.0%
Grade 4	93.0%	49.4%
Grade 5	85.1%	48.8%
Grade 6	67.7%	43.5%
Grade 7	85.8%	43.4%
Grade 8	86.2%	28.2%
Algebra	100%	45.8%

# Comparative Data

## Special Education and Regular Education

### Math

	% Meeting or Exceeding Expectations	
	Special Education	Regular Education
Grade 3- 5	45 out of 67 students	298 out of 323 students
Grade 6 - 8	41 out of 74 students	320 out of 359 students

COMPARISON OF UPPER SADDLE RIVER'S  
SPECIAL EDUCATION AND REGULAR EDUCATION SUBGROUP DATA  
2016-2018 PARCC ADMINISTRATIONS  
MATHEMATICS - PERCENTAGES

	<b>Percent Meeting and Exceeding Expectations</b>		
	<u>2016</u>	<u>2017</u>	<u>2018</u>
General Education	85%	91%	91%
Special Education	55%	52%	61%



# Monitoring Individual Students Mathematics

	2017-2018	
	<u>2017</u> <u>(below grade level)</u>	<u>2018</u> <u>(% meeting or</u> <u>exceeding)</u>
Grades 3/4	16 students	56%
Grades 4/5	15 students	47%
Grades 5 /6	26 students	19%
Grades 6/7	27 students	48%
Grades 7/8	26 students	50%

## COMPARISON OF UPPER SADDLE RIVER'S STUDENTS TESTED SPRING 2016 AND SPRING 2017 PARCC ADMINISTRATIONS

	Students Tested		
	<u>2016</u>	<u>2017</u>	<u>2018</u>
Math	96%	99%	<b>99%</b>
Language Arts	96%	99%	<b>99%</b>

# Upper Saddle River 2018 ACCESS 2.0

Proficiency Level	Number of Students
1- Entering	
2- Emerging	
3 - Developing	
4 - Expanding	
5 - Bridging	
6 - Reaching	

# Upper Saddle River 2018 - Dynamic Learning Map

	<b>ELA (Number of Students)</b>	<b>MATH (Number of students)</b>
<b>Emerging</b>	3	3
<b>Approaching the Target</b>	0	1
<b>At Target</b>	0	0
<b>Advanced</b>	2	1

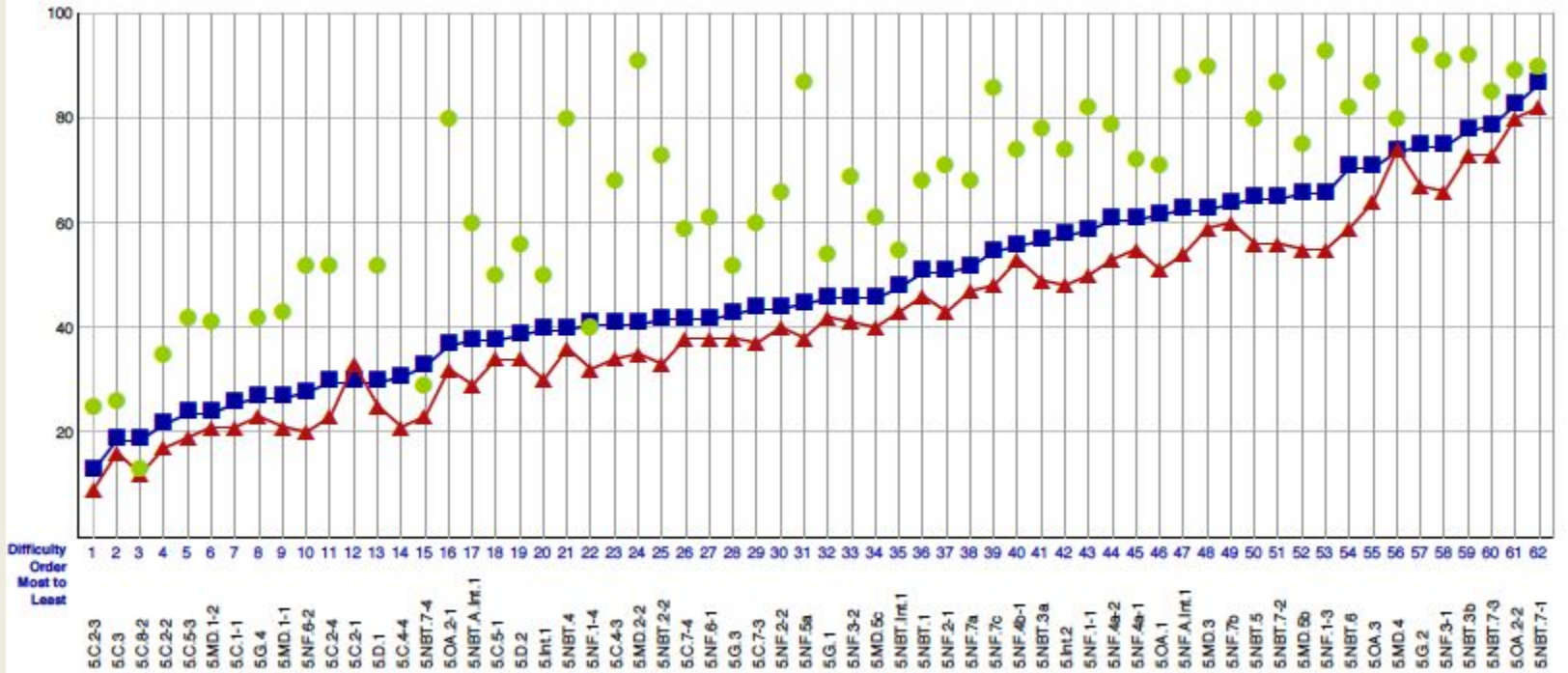
# NJSLA - Science 2018

- 2018 - Field Test
- No results this year
- Assessment will be administered again this school year
- Results will be reported for the first time in 2019

# District Level Reports

## Students with Valid Scores (134)

Purpose: This report presents the average percent correct by Evidence Statement for district, state and Cross-State.



# District Level Reports

ACY  
017

ved

	Language			Reading			Writing Categories			Prose Constructed Response														
	Vocabulary Acquisition & Use			Literacy in History / Social Studies		Literacy in Science & Technical Subjects																		
<b>CORE</b>	L.7.4 L.7.4.a L.7.4.b L.7.4.c L.7.4.d L.7.5 L.7.5.a L.7.5.b L.7.5.c L.7.6	RH.6-8.1 RH.6-8.2 RH.6-8.3 RH.6-8.4 RH.6-8.5 RH.6-8.6 RH.6-8.7 RH.6-8.8 RH.6-8.9 RH.6-8.10	RST.6-8.1 RST.6-8.2 RST.6-8.3 RST.6-8.4 RST.6-8.5 RST.6-8.6 RST.6-8.7 RST.6-8.8 RST.6-8.9 RST.6-8.10	Written Expression	Writing Knowledge	Literary Analysis										Research Simulation	Narrative Writing							
O11	56	30	10	49	100	8	46	71	14	44	83	36	54	100	9	37	79	19	45	100	19	55	80	15